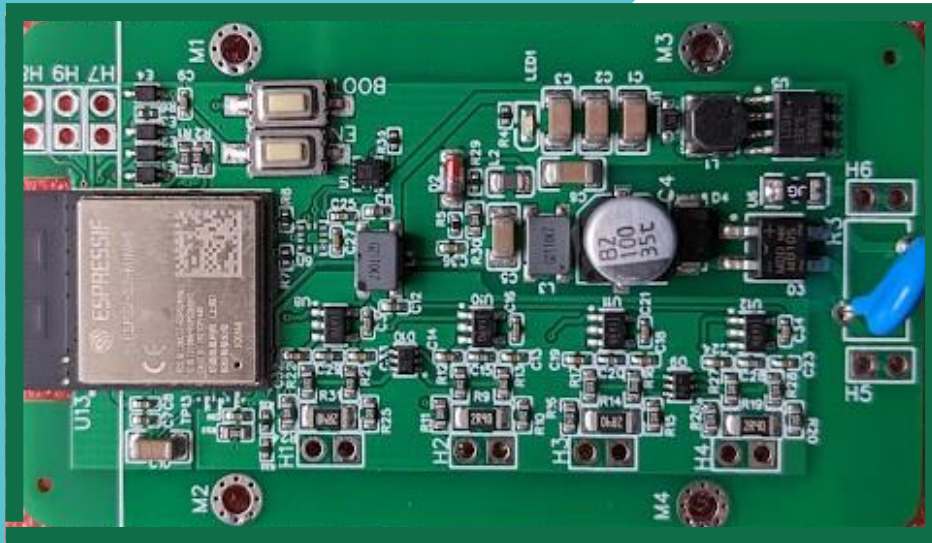




# IDF SENSOR



## Product Specification Sheet

<b>IDF Sensor</b> *Specs are subject to change without prior notification		
<b>Processor System</b>	<b>Power</b>	<b>2.4W</b>
	<b>CPU</b>	<b>ESP32</b>
	<b>Flash</b>	<b>4MB</b>
	<b>RAM</b>	<b>512KB</b>
<b>IO</b>	<b>Serial</b>	<b>1x serial console</b>
	<b>GPIO</b>	<b>4x 13bit ADC for fence breach detection</b>
	<b>Wireless</b>	<b>1x 802.11 b/g/n/lr Wi-Fi Radio 1x BLE 5.0 radio</b>
<b>Power</b>	<b>Input Voltage</b>	<b>24VDC/24VAC +- 10% Maximum Input Voltage : 32 VDC</b>
	<b>Current</b>	<b>100mA</b>
<b>Software</b>	<b>OS</b>	<b>FreeRTOS</b>
	<b>Configuration UI</b>	<b>To be developed</b>
<b>Protocol</b>	<b>WiFi Mesh</b>	
	<b>Custom A1 message protocol over WiFi Mesh</b>	
	<b>OTA</b>	
<b>Security</b>	<b>Secure boot</b>	<b>Only authorized software can boot on device</b>
	<b>Code encryption</b>	<b>Executable code is encrypted with device specific random key for code protection at rest</b>
	<b>Data encryption</b>	<b>On board light weight data retention system with data encryption with device specific key</b>
	<b>Secure certificate store</b>	<b>Encrypted key store protected against unauthorized read, including side loading of firmware.</b>
<b>Environment</b>	<b>Temperature</b>	<b>-20 °C to 85°C</b>
<b>LoS</b>	<b>Range</b>	<b>250 m LoS no obstruction</b>